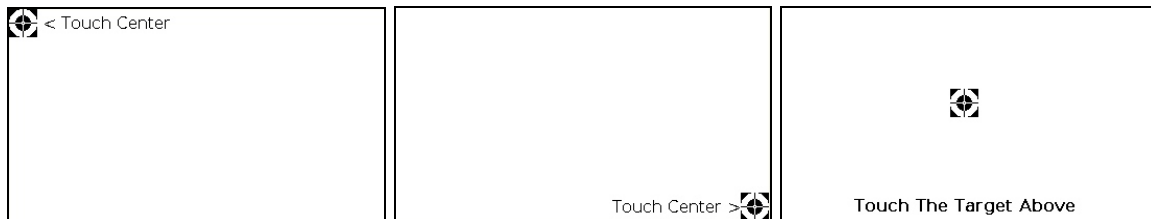


**CP-800 Software Update Procedure V1.0.6/2.0.1.4 and higher**

1. Visit [www.classeaudio.com](http://www.classeaudio.com). Operating software can be found under **SERVICE & SUPPORT → SOFTWARE & CODES → OPERATING SOFTWARE→CP-800** (Folder).
2. Download the latest CP-800 released software (.zip file) and extract/unzip the entire CP-800 folder onto a USB stick. The USB stick should then have a folder named CP-800 containing the latest software (*if the folder is located within another folder or if the folder's name is different in any way, the update will not proceed*).
3. Confirm that you have a folder named CP-800 on the USB stick then eject the USB stick from your computer. Make sure the unit is powered off by using the rear panel switch before plugging the USB stick into the front panel USB port of the CP-800.
4. Power up the CP-800. The update process will begin automatically. A series of red, green, blue and cyan LED flashes will be seen on the front of the CP-800 then, a cyan LED will blink for approximately 3 minutes. This will continue until you reach the calibration step.
5. You will then see a white screen with a small target in the upper left corner. For an ideal screen calibration, make use of a stylus or the tip of an eraser head. Press the target then do the same in the lower right corner and center of the screen as prompted.



*Note: If you missed to hit the center of the icon it will restart on the upper left again*

6. For V1.0.6 and higher, after the touchscreen calibration, the unit will enter the normal operating mode. Remove the USB key, the CP-800 can now be used normally.
7. For V2.0.1.4 and higher with a digital audio board supporting Ethernet, the following message "Please wait – Software update continues – Do not power off" will be displayed. The front LED will flash cyan and the firmware download will continue for approximately 5 more minutes.
8. When completed, the unit will enter the normal operating mode. You can now remove the USB stick from the CP-800.